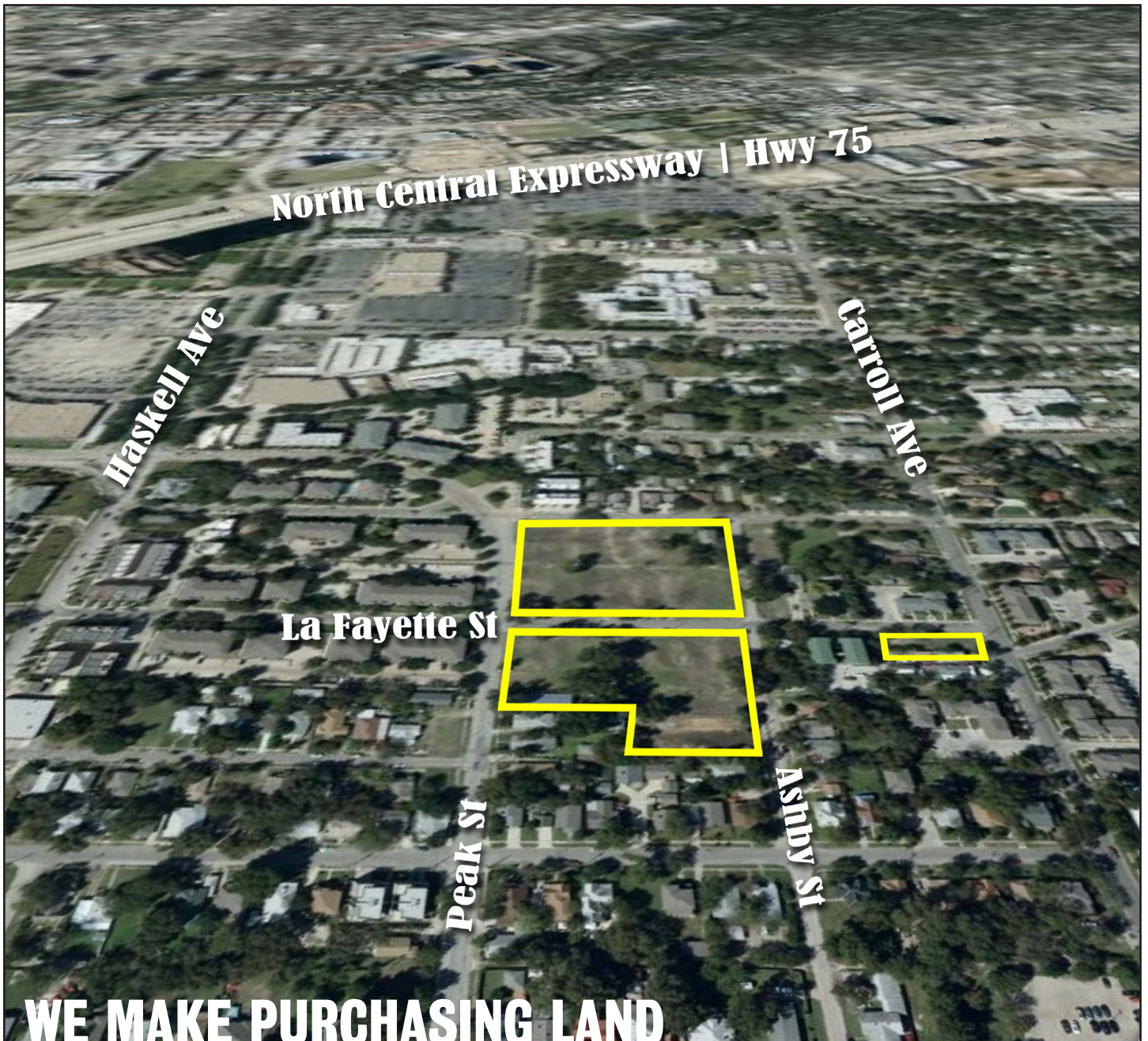


PEAK & LA FAYETTE

LAND FOR SALE



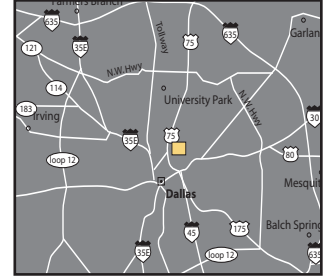
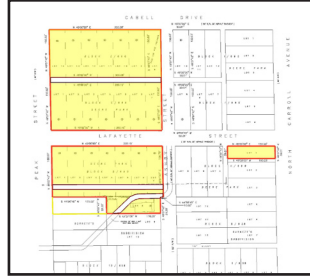
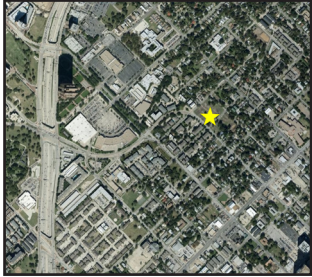
WE MAKE PURCHASING LAND

FAST, EASY AND ECONOMICAL.

BOXER PROPERTY®

PEAK & LA FAYETTE

LAND FOR SALE



Located at the outskirts of busy Downtown Dallas, these tracts of land lie just East of City Place Center. Redevelopment has been ongoing in the area as Downtown has grown past the confines of the four highway boundaries. With Lower Greenville and Uptown just around the corner, and renewed revitalization efforts in the community, this land is a great opportunity for building or holding.

At Boxer, we take pride in customer service and provide you with various methods to reach us for assistance. Submit your request through our website, by phone or speak face-to-face at our local office. We'll be there to help.

For an appointment anytime, please call (214) 651-RENT(7368) or visit us on the Internet at www.BoxerProperty.com for more information.

N PEAK ST AND LA FAYETTE ST, DALLAS, TEXAS 75204

GREAT AMENITIES

- Dense urban residential, retail and commercial communities nearby
- Zoned Multi-family Residential
- Over 1,800 feet of frontage on N Peak St, La Fayette St, Carroll Ave, Cabell Dr and Ashby St
- 3.86 acres

SIMPLE PROCESS

- Contact us anytime for a tour!
- Available for immediate sale

EXCELLENT LOCATION

- In the outskirts of Downtown Dallas
- Exit Lemmon Ave from Hwy. 75, and head East. Lemmon Ave turns into N Peak St
- Easy Access to Many Major Freeways (Hwy. 75, I-30, I-35, I-45, Woodall Rodgers Fwy, Hwy. 80, and Hwy. 67)

